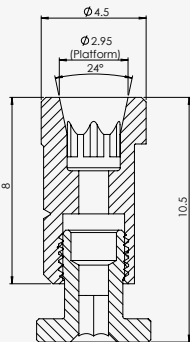



CAD/CAM COMPONENTS | DIGITAL ANALOGS

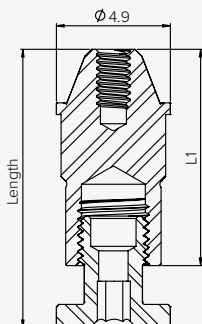
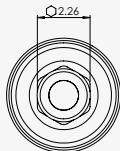


DESIGN FEATURES	<ul style="list-style-type: none"> • Analog body and screw • Implant and multi-unit
CLINICAL BENEFITS	<ul style="list-style-type: none"> • Accurate and decisive fit in printed model • Removable • Reusable
MATERIAL	<ul style="list-style-type: none"> • Body: Stainless Steel • Screw: Titanium Alloy (Ti-6Al-4V ELI)



ORDERING INFORMATION

Digital Analog	Ø D (mm)	L (mm)	L1 (mm)	REF
	4.5	10.5	8	NGDT6010



Digital Analog for Multi-Unit	Ø D (mm)	L (mm)	L1 (mm)	REF
	4.9	12	9	NGDT7151